

A Spooky Assemblage

Designed by: Cat Kerr

Create a Spook-tacular Halloween décor using Graftix Metallic Foil Board, Funky Film and Computer Graftix Film. This project would also be great for a classroom art project!

Supplies:

Graftix Metallic Board
Graftix Funky Film
Computer Graftix Clear
Inkjet Printer
Scissors
Shadowbox
Paper Cutter
Seth Apter Embossing Folder
Spellbinders Machine or any Embossing machine
Fine Sand Paper
Glue
Cardboard
2" Circle Punch
Black Glitter Letters and Stickers
Black Rhinestone sticker



Directions:

1. Cut the Funky Film to fit the sides and back of the shadow box. Remove the backing and apply it to the shadow box.
2. Print a black and white skull image onto Computer Graftix Clear Film. Remove the backing and apply it to separate sheet of Funky Film and then cut out.
3. Add texture to a piece of Metallic Foil Board by placing it into an embossing folder and then running it through and embossing machine. Lightly sand it to show all the raised edges.
4. Cut the Metallic Foil Board sheet into pieces to fit the inside the shadowbox and glue them into place.
5. Finish the edges of the shadowbox by gluing on a strip of Metallic Foil Board. Use the circle cutter to cut a circle out of a piece of Metallic Foil Board and then cut the circle into quarters. Glue a quarter on to each corner and then lightly sand with fine sandpaper.
6. Glue two pieces of cardboard together and then glue it to the spot where you want to place the skull. This will give the skull some height. Then glue the skull onto the cardboard.
7. Add letter, spider and web stickers and finish with a black rhinestone sticker.



Your Source for Creative Plastic Films

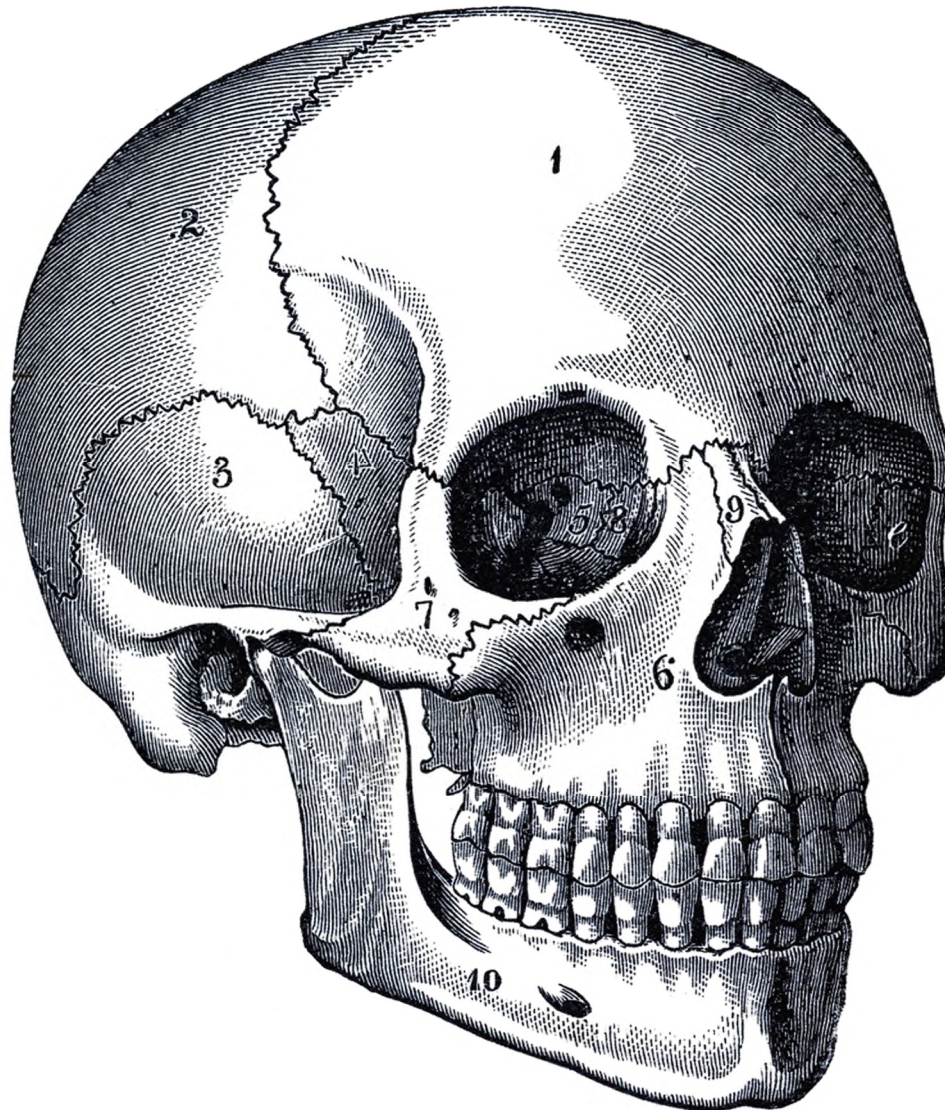
www.grafixarts.com
marketing@grafixarts.com

A Spooky Assemblage

Designed by: Cat Kerr

1 THE HEAD.

Fig. 4.



Your Source for Creative Plastic Films

www.grafixarts.com

marketing@grafixarts.com