

Lichtenstein Style Pop Art Portrait

Designed by: United Art & Education

United Art & Education creates their own version of a Lichtenstein Style Pop Art using Grafix Clear-Lay Film.

Supplies:

Grafix Clear-Lay Film
Roylco Pop Culture Paper
Fine Point Black Sharpie
Black Cardstock
Scissors
Pen/Pencil
Glue Stick
Tape
Portrait-Style Photographs
Printer/Copier
White Paper

Directions:

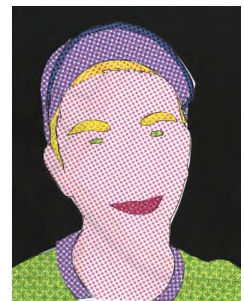
1. Print a portrait on 8.5 x 11" white paper. Tape a piece of Grafix Clear-Lay Film to the top of the printed portrait. Trace the facial features with a black Sharpie.
2. Photocopy the sheet of Clear-Lay Film to produce a black and white copy. Cut out the main features (hair, eyes, shirt, mouth, head, etc.) Depending on the arrangement, you may need 2 copies in order to cut out all the features.
3. Trace each feature onto Roylco's pop culture paper and cut it out. Using the original portrait and outline as a guide, glue the patterned paper onto black cardstock.
4. Tape the Clear-Lay sheet to the black cardstock, lining up the features. Trace over the lines if needed to fill in spaces and darken the outlines.



Step 1



Step 2



Step 3



Your Source for Creative Plastic Films

www.grafixarts.com
marketing@grafixarts.com