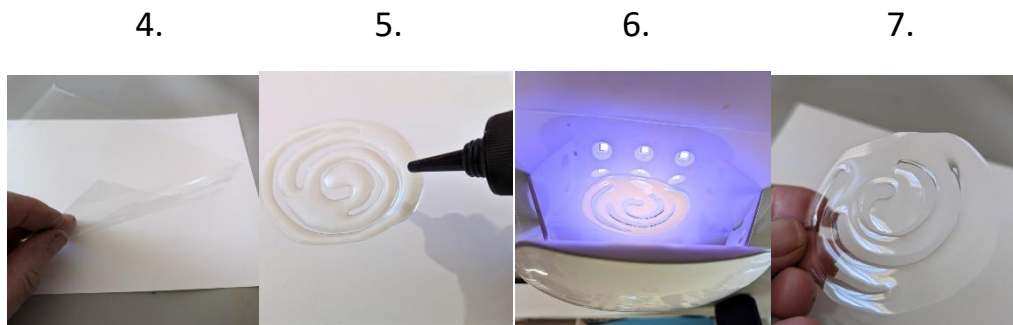


The film was not affected by the heat of the lamp. It remained flat and did not curl. The resin detached easily from the film in one piece.



Clear Computer Grafix Film for Inkjet 8.5×11” and 11×17” (non-adhesive backing) & two-part epoxy resin

A print was made using the CCG film through a standard inkjet printer. This was cut to size 4” x 4”

The epoxy was a 1:1 ratio of resin to hardener. Once thoroughly mixed it was divided into 2 containers. Two separate colors of mica pigment were mixed into each container.

The resin and mica mix was randomly applied to the surface and sides of a 4” x 4” x 2” birch wooden panel.

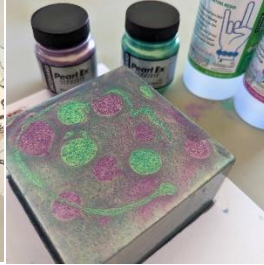
While the resin is still in a fluid state, position the clear printed Computer Grafix film on top of the resin coated panel. Mix up a second batch of epoxy resin and evenly coat over the top on the film to encase the image within the clear resin, providing a durable glossy finish.

No reaction to the resin was observed. The film lay flat and did not curl. Note all resin will yellow over time. However, some higher quality resins will yellow at a slower rate.

8.



9.



10.



Final product

11.

